



Europe Study Centre (ESC)
Associate partner in Germany.



Westsächsische Hochschule Zwickau
University of Applied Sciences

WHZ- Westsächsische Hochschule Zwickau



University Information

The core focus of West Saxon University of Applied Sciences of Zwickau is placed on the automobile industry. The State of Saxony invested considerable resources in the refurbishing and modernization of an old engineering school, which had already been an important centre for educating and training automotive engineers in 1897. It is well known beyond Germany's borders for car manufacturers such as Horch, Audi and Volkswagen.

More than 1,000 students from 50 different countries begin their studies at the university each year, choosing from among 40 study programmes offered in the fields of engineering and technology, business and life sciences.

Living in Zwickau

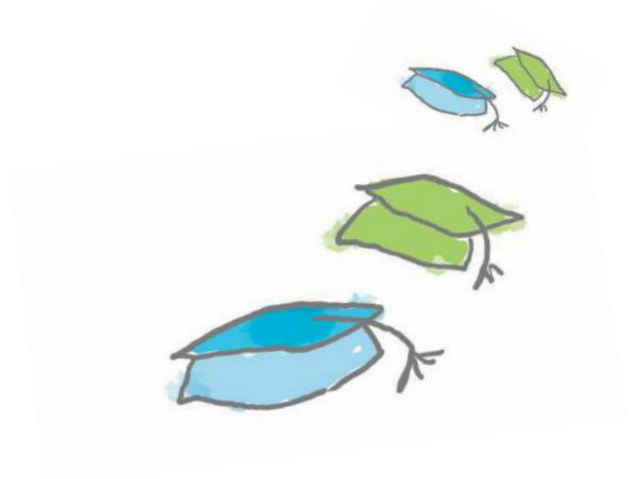
Zwickau, known as the city of automobiles, is the centre of the Saxon automotive industry, with a tradition over one hundred years old. The city is situated in a valley at the foot of the Erzgebirge Mountains and is also part of the so-called Saxon metropolitan triangle, an economic network

University Highlights

- State-of-the-art facilities and strong working relationships with various industries
- Innovative contributions to applied research every year

USPs of WHZ Zwickau:

- Very affordable (monthly living costs) 100€ less than other study locations)
- Excellent learning environment with strong practice-orientation
- Small classes and personal support
- 100 years of automobile technology in town
- Strong links to automobile industry suppliers
- Located at the foot of the Erzgebirge region with lots of possibilities for leisure activities in summer and winter





Europe Study Centre (ESC)
Associate partner in Germany.



Westsächsische Hochschule Zwickau
University of Applied Sciences



Requirements for Bachelor:

- Equivalence of secondary certification (e.g. A-level, Baccalauréat, Matura etc.)
- Passing DSH or the TestDaf examination

Requirements for Master:

- Bachelor's degree in related field of study
- Excellent grades in all fields
- Passing DSH or the TestDaf examination

Master's Degrees available

Automotive Engineering
Business Administration - Controlling & Logistics
Computer Sciences
Health Sciences
Languages & Business Administration German-Chinese
Management
Nanotechnology
Traffic and Transport Engineering

Bachelor's Degrees Available

Automobile Production (Diplom)
Automotive Electronics (Diplom)
Automotive Engineering (Diplom)
Automotive Informatics
Biomedical Engineering
Business & Engineering (Diplom)
Business Administration
Computer Sciences
Design
Electrical Engineering (Diplom)
Health Care Management
Industrial Management & Engineering (Diplom)
Informatics in Health Care
Information & Communication Technology (Diplom)
Languages & Business Administration
Management of Health Care Services
Microtechnology
Musical Instrument Technology
Physical Engineering
Public Utilities Management
Sign Language Interpreting (Diplom)
Textile Structures & Technologies
Utilities and Environmental Engineering (Diplom)

